



PO Box 881, Morwell, Victoria 3840, Australia
Ph + 61 (0) 3 5172 1200
Fax + 61 (0) 3 5172 1201
www.gippsaero.com.au

SB-GA8-2009-56

Issue 3

MANDATORY

Service Bulletin

1 Subject:

Overheating of overhead electrical connection used by cabin fresh air blower.

2 Applicability:

All GA8 and GA8-TC 320 aircraft, up to and including GA8-TC 320-20-261 and GA8-20-262.

3 Amendments:

Issue 1: Initial Issue.

Issue 2: Part number for wire corrected, GAE12#611.

Issue 3: Applicability revised to include all GA8 and GA8-TC 320 aircraft. Corrective actions revised.
See GAE11#2788

4 Background:

There have been some field reports indicating overheating of the connector plug J104/P104 at pin 8 between the aircraft wiring loom and the overhead electrical panel. Issue 3 gives a new, one-time, modification to address this issue.

5 Compliance:

For applicable aircraft, within 110 hours or thirteen months from issuance of this Service Bulletin, whichever is sooner.

Table 1: Action Required

AIRCRAFT CONFIGURATION	ACTION REQUIRED
Connector J104/P104 bypassed in accordance with Option 2 of SB-GA8-2009-56 Issue 2.	None
All other applicable aircraft	Section 12

6 Weight and Balance:

Negligible effect on weight and balance.

7 Approval:

This Service Bulletin has been approved in accordance with the requirements of Australian Civil Aviation Safety Regulation 21.095 (1998).

8 Parts and Materials:

- The parts required to incorporate this Service Bulletin are detailed in Table 2 and are available as kit P/No. GA8-SB-2009-56-1.
- Optional parts are listed in Table 3.

Table 2: Required Parts.

ITEM	PART NUMBER	DESCRIPTION	QTY
1	1-480699-0	CONN HOUSING CAP 2 POS UNIVERSAL MATE-N-LOK	1
2	350547-1	CONTACT PIN 20-14 AWG CRIMP MATE-N-LOK	2
3	1-480698-0	CONN HOUSING PLUG 2 POS UNIVERSAL MATE-N-LOK	1
4	350550-1	CONTACT SKT 20-14 AWG CRIMP MATE-N-LOK	2

Table 3: Optional Parts.

ITEM	PART NUMBER	DESCRIPTION	QTY
102	1-480708-0	CONN PLUG HOUSING 12 POS UNI. MATE-N-LOK	1
103	1-480709-0	CONN CAP HOUSING 12 POS UNI MATE-N-LOK	1
104	350550-1	CONTACT SKT 20-14 AWG CRIMP MATE-N-LOK	2
105	350547-1	CONTACT PIN 20-14AWG	2

9 Parts Availability:

Parts can be obtained directly from GippsAero using the following contact details.

Tel: +61 (0)3 5172 1200

Fax: +61 (0)3 5172 1201

Email: PARTS@gippsaero.com.au

10 Labour:

2.5 hours should be allocated for completing the work detailed in this Service Bulletin.

11 Warranty:

Aircraft covered by warranty may claim the direct cost of incorporating the requirements of this Service Bulletin by contacting GippsAero Customer Service

Tel: +61 (0)3 5172 1200

Fax: +61 (0)3 5172 1201

Email: SUPPORT@gippsaero.com.au

12 Accomplishment Instructions:

WARNING:

IT IS THE RESPONSIBILITY OF ALL PERSONNEL TO ENSURE WORK HEALTH AND SAFETY REQUIREMENTS ARE MET AT ALL TIMES. ALL PERSONNEL MUST COMPLY WITH ALL WORK HEALTH AND SAFETY REQUIREMENTS AS DEFINED OR RECOMMENDED BY:

- AIRCRAFT MAINTENANCE AND OPERATION MANUALS;
- RELEVANT NAA REGULATIONS AND ADVISORY DOCUMENTATION;
- ORGANISATION MANUALS, INCLUDING NAA ENDORSED OPERATIONAL AND MAINTENANCE MANUALS; AND
- RELEVANT LOCAL, STATE AND FEDERAL GOVERNMENT REQUIREMENTS.

WARNING:

READ THE APPLICABLE MATERIAL SAFETY DATA SHEET (MSDS) FOR ANY CONSUMABLE USED DURING THE ACCOMPLISHMENT OF THIS SERVICE BULLETIN AND EMPLOY ANY RECOMMENDED PERSONAL PROTECTIVE EQUIPMENT (PPE) CONTAINED THEREIN.

NOTE:

Unless otherwise specified, reference to the GA8 or GA8-TC 320 Service Manual and FAA Advisory Circular (AC) 43.13-1B should be made when carrying out the procedures prescribed in this Service Bulletin. In case of a discrepancy between the Service Manual and the AC, the Service Manual takes precedence.

NOTE:

Read all the applicable instructions prior to initiating any work.

NOTE:

Unless stated otherwise, hardware removed during the procedure below is to be inspected and re-used if serviceable.

1. Inspection of Connectors

- 1.1. Pull or open all the underfloor circuit breakers.
- 1.2. The affected connectors P104 and J104 are located port side just aft end of the electrical overhead panel. Remove the forward most centre interior roof panel to access the connectors.
- 1.3. Disconnect connector P104 / J104 and remove the blower fan circuits, HC1A14 and HC1B14 (Figure 1).
- 1.4. Inspect the existing 12-way P104 / J104 connector housing and replace if necessary, using Items 102 and 103 (Table 3). When replacing housing, mark Item J103 as "J104" and Item 102 as "P104" using a permanent marker.
- 1.5. Label Item 1 "J104B" and Item 3 "P104B" using a permanent marker.
- 1.6. Inspect the metal contact pin and socket for the blower fan circuits, HC1A14 and HC1B14 and replace with Item 104 and 105 if damaged or heat affected. Crimp tool HTR 11-01-0084 (Sargent Tools) is recommended for this task: Use nest B for 14 AWG wires. Install connectors to the housings at position 1.

NOTE:

All aircraft equipped with a high-speed blower fan must use 14 Gauge wire for circuit HC1A14 and HC1B14.

- 1.7. Assemble connectors J104B / P104B and P104 / J104.
- 1.8. Close the underfloor circuit breakers and conduct functional tests of the blower fan.
- 1.9. Replace interior trim panels.

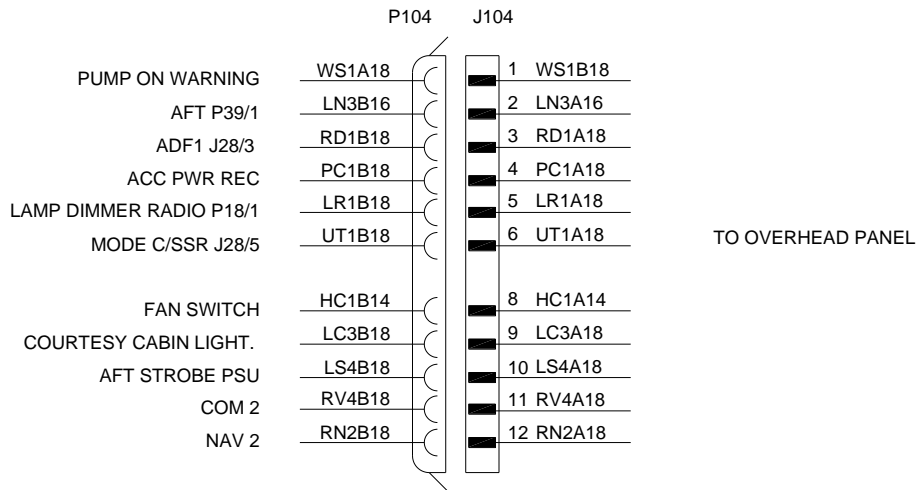


Figure 1: Connector P104 / J104

13 Documentation:

Update aircraft logbook to reflect incorporation of this Service Bulletin.

14 Compliance Notice:

Complete the Document Compliance Notice and return to GippsAero by mail, fax or email.

DOCUMENT COMPLIANCE NOTICE



Document:

SB-GA8-2009-56

Issue 3

Aircraft Serial Number: GA8-_____

Service Bulletin SB-GA8-2009-56 Issue 3 has been incorporated in the above aircraft.

Date of Incorporation: _____

Signed

Print Name: _____

Please post, fax or email this compliance notice to:

GippsAero

Attn: Technical Publications

Email: TECHPUBS@gippsaero.com.au

P.O. Box 881

Morwell Victoria 3840

Australia

Fax.: +61 03 5172 1201