



PO Box 881, Morwell, Victoria 3840, Australia  
Ph + 61 (0) 3 5172 1200  
Fax + 61 (0) 3 5172 1201  
www.gippsaero.com.au

# SB-GA8-2009-55

Issue 2

**OPTIONAL**

## Service Bulletin

### Subject:

Remote Oil Filter

### Applicability:

This Service Bulletin is applicable to the aircraft serial numbers identified in Table 1.

Table 1: Applicability

PART	APPLICABILITY
GA8	All*

\* For Issue 2 and onwards, an authorisation letter from GippsAero allowing the installation of this Service Bulletin to the aircraft serial number is required for new installations.

### Amendments:

Issue 1: Initial Issue.

Issue 2: Modification to item 2a included. Weight and balance section amended. Contact details updated. Continuing airworthiness section added. Format updated to current Service Bulletin standard. Refer to GAE11#2789.

### Background:

This Service Bulletin documents the installation of an Airwolf brand remote mounted oil filter. The installation is standard for all turbocharged variants of the GA8 Airvan and is offered as an option for the naturally aspirated variant of the GA8 Airvan.

### Compliance:

For applicable aircraft this optional Service Bulletin may be incorporated at the owner's discretion.

### Weight and Balance:

Refer to Airwolf Filter, Corp Installation Instructions No. AFC-K007-II-A dated 4-2-2021 or later approved revision.

### Approval:

This Service Bulletin has been approved in accordance with the requirements of Australian Civil Aviation Safety Regulation 21.095 (1998).

## Parts:

Item	Part Number	Description	Qty
Kit Part Number SB-GA8-2009-55-1			
1	GA8-716047-11	Remote Oil Filter Bracket	1
1a	LYC-10	Engine Adapter	1
2	GA8-792011-131	Port 'A' Oil Line	1
2a	61173 OR SL 61173	Adapter Base Gasket	1
3	GA8-792011-133	Port 'B' Oil Line	1
4	CH48109-1	Oil Filter	1
4a	AN837-8D	Elbow 45° Bulkhead Fitting	2
5	AN823-8D	Elbow 90°	1
6	AN822-8D	Elbow 45°	1
6a	AN6289-8D	Nut	2
7a	MS28773-08	Boss Gasket	2
8a	MS9387-08	O-Ring	2
9	MS35769-11	Oil Temperature Sensor Gasket	1
10	MS35769-21	Thermostatic Valve Gasket	1
11	AN525-1032R8	Screw	4
12	AN960-10L	Washer	4
13	MS21042-3	Nut	4
13a	OFB-10	Oil Filter Base	1
14	AN4H4A	Bolt	4
15	AN960-416	Washer	4
16	Loctite 567	PST Thread Sealant	A/R
17	MS20995C32	Safety Wire	A/R
25	OTA-527	Oil Temp Adapter	1

## Parts Availability:

Parts can be obtained directly from GippsAero using the following contact details.

Tel: +61 (0)3 5172 1200

Fax: +61 (0)3 5172 1201

Email: [PARTS@gippsaero.com.au](mailto:PARTS@gippsaero.com.au)

## Labour:

Approximately 2.0 hours per aircraft should be allocated for completing the work detailed in this Service Bulletin.

## Warranty:

This is an optional modification. The cost of installation is not eligible for warranty claims, however, component warranties are provided by the respective manufacturers.

Tel: +61 (0)3 5172 1200

Fax: +61 (0)3 5172 1201

Email: [SUPPORT@gippsaero.com.au](mailto:SUPPORT@gippsaero.com.au)

## Instructions:

### **WARNING:**

**IT IS THE RESPONSIBILITY OF ALL PERSONNEL TO ENSURE WORK HEALTH AND SAFETY REQUIREMENTS ARE MET AT ALL TIMES. ALL PERSONNEL MUST COMPLY WITH ALL WORK HEALTH AND SAFETY REQUIREMENTS AS DEFINED OR RECOMMENDED BY:**

- AIRCRAFT MAINTENANCE AND OPERATION MANUALS;
- RELEVANT NAA REGULATIONS AND ADVISORY DOCUMENTATION;
- ORGANISATION MANUALS, INCLUDING NAA ENDORSED OPERATIONAL AND MAINTENANCE MANUALS; AND
- RELEVANT LOCAL, STATE AND FEDERAL GOVERNMENT REQUIREMENTS.

### **WARNING:**

**READ THE APPLICABLE MATERIAL SAFETY DATA SHEET (MSDS) FOR ANY CONSUMABLE USED DURING THE ACCOMPLISHMENT OF THIS SERVICE BULLETIN AND EMPLOY ANY RECOMMENDED PERSONAL PROTECTIVE EQUIPMENT (PPE) CONTAINED THEREIN.**

### **NOTE:**

*Unless otherwise specified, reference to the GA8 Service Manual and FAA Advisory Circular (AC) 43.13-1B should be made when carrying out the procedures prescribed in this Service Bulletin. In case of a discrepancy between the Service Manual and the AC, the Service Manual takes precedence.*

### **NOTE:**

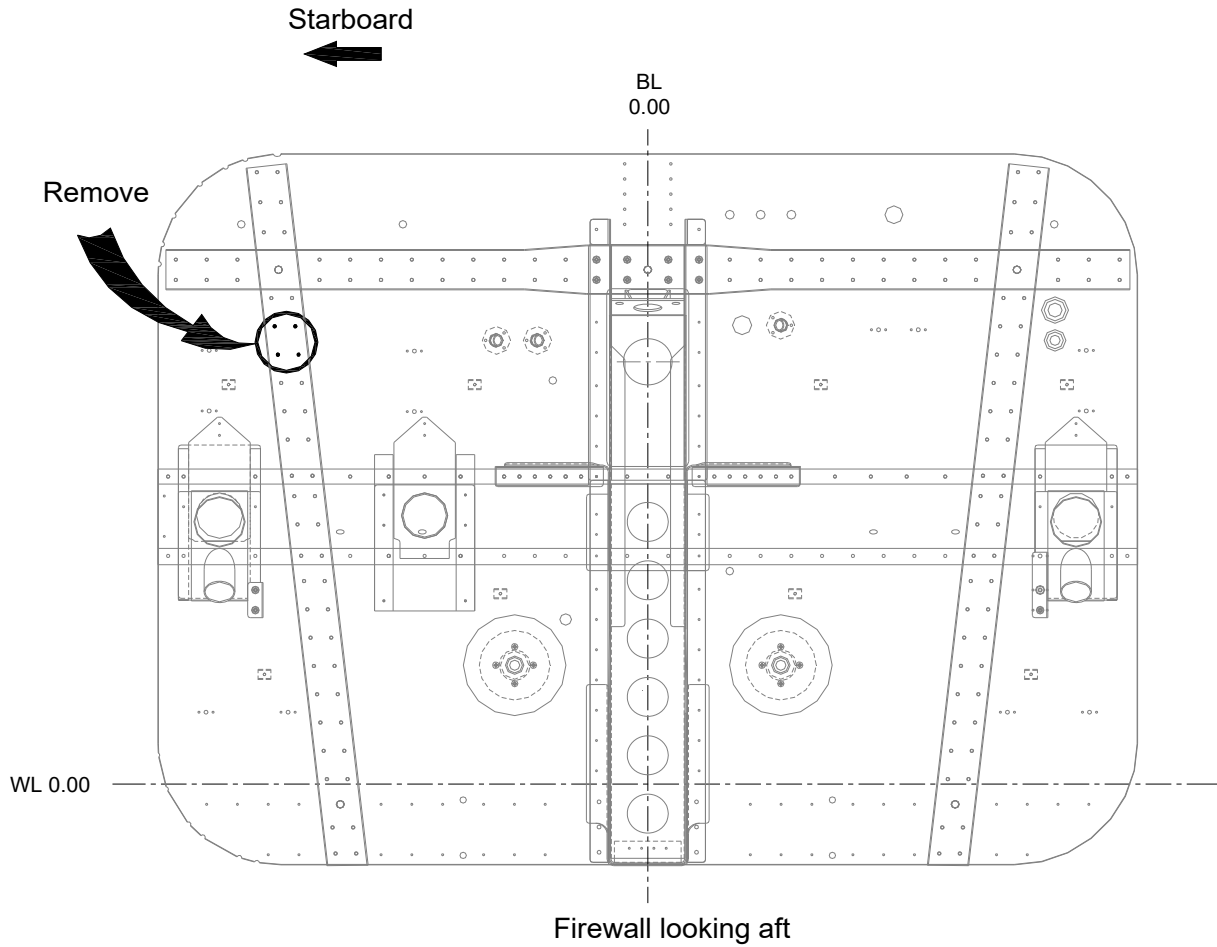
*Read all the applicable instructions prior to initiating any work.*

### **NOTE:**

*This Service Bulletin must be read in conjunction with Airwolf Filter Corp Installation Instructions AFC-K007-A-II dated 4-2-2021 or later approved revision.*

## 1 Installation of oil filter mounting bracket

1.1 Remove 4 x rivets from firewall and drill  $\text{\O}3/16''$  as shown in Figure 1.



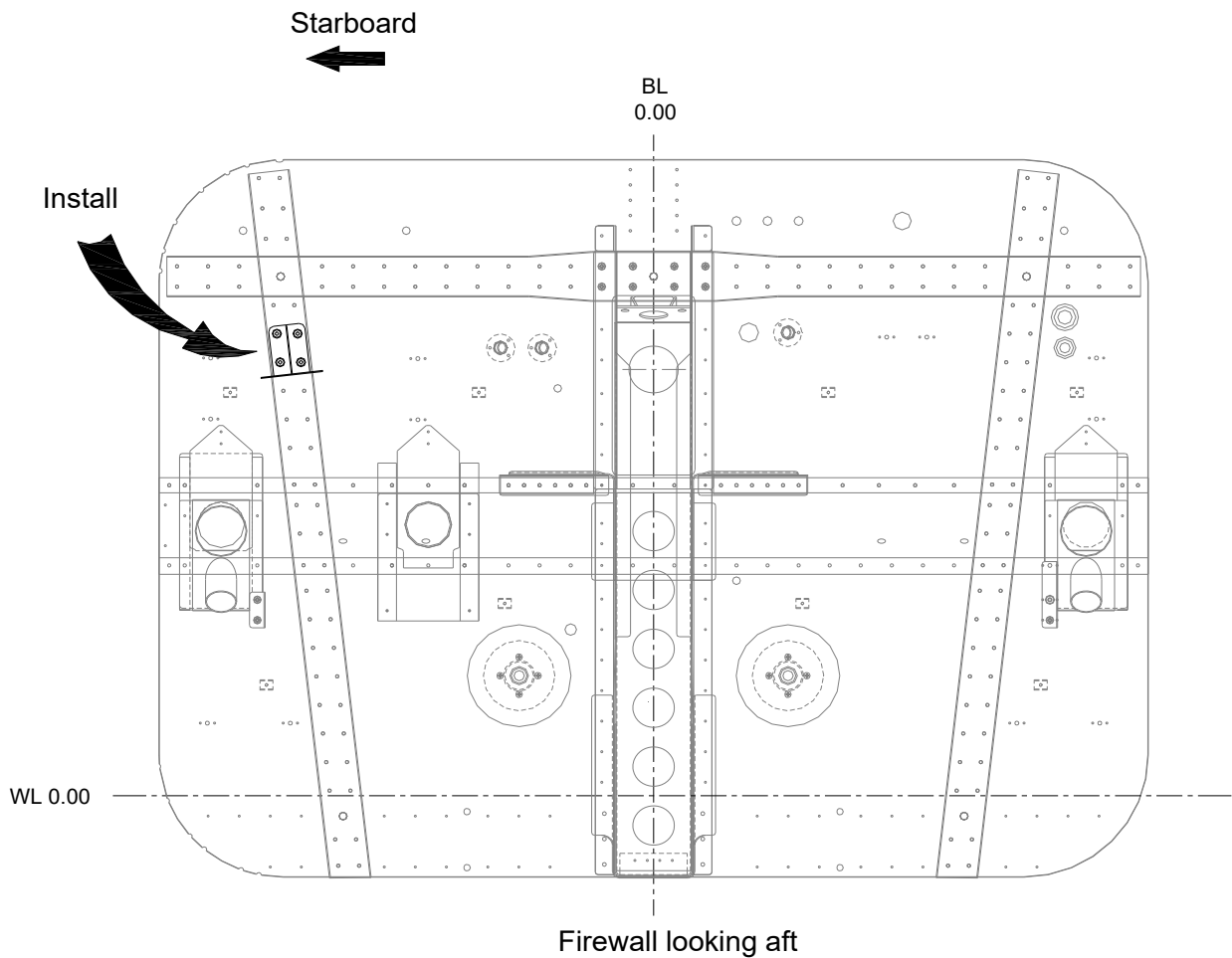
**Figure 1**

1.2 Install oil filter welded bracket (GA8-716047-11) as shown in Figure 2 using the following hardware:

AN525-1032R8 Screw x 4

AN960-10L Washer x 4

MS21042-3 Nut x 4



**Figure 2**

## 2 Installation of Oil Filter Base and Filter

**WARNING:**

**TO PREVENT GALLING OF PARTS DO NOT SCREW IN ANY FITTINGS TO THE OIL FILTER BASE (OFB-10) WITHOUT USE OF LOCTITE 567 THREAD SEALANT OR EQUIVALENT.**

- 2.1 Fit 90° elbow (AN823-8D) into port 'A' and 45° elbow AN822-8D into port 'B' of oil filter base. (**Note warning above**).
- 2.2 Install oil filter base (OFB-10) to the oil filter welded bracket (GA8-716047-11) using the following hardware and lock wire as shown in Figure 3:
  - 4 x AN4H-4A Bolt
  - 4 x AN960-416 Washer
- 2.3 Apply a thin film of oil to the seal and install filter (CH48109-1) to filter base and torque to the manufactures recommendation. Lock wire in accordance with standard practises.



Figure 3

### 3 Modification of Gasket

- 3.1 Trim item 2a to match the opening in item 1a. This will result in an area to be trimmed as shown in Figure 4 and in a final gasket shape as shown in Figure 5 against the engine and Figure 6 against item 1a. Ensure smooth edges with no burrs and a minimum width of 0.375" in the region of the removed material. Confirm that item 2a is in the correct orientation noting this part is not symmetrical.

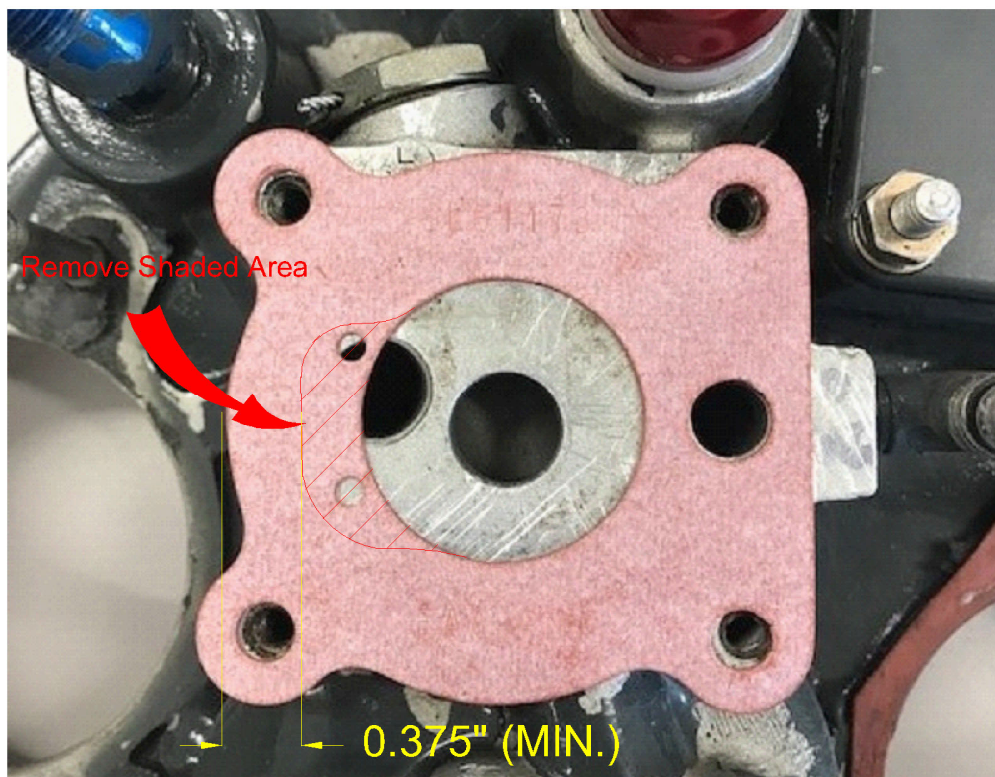


Figure 4



Figure 5

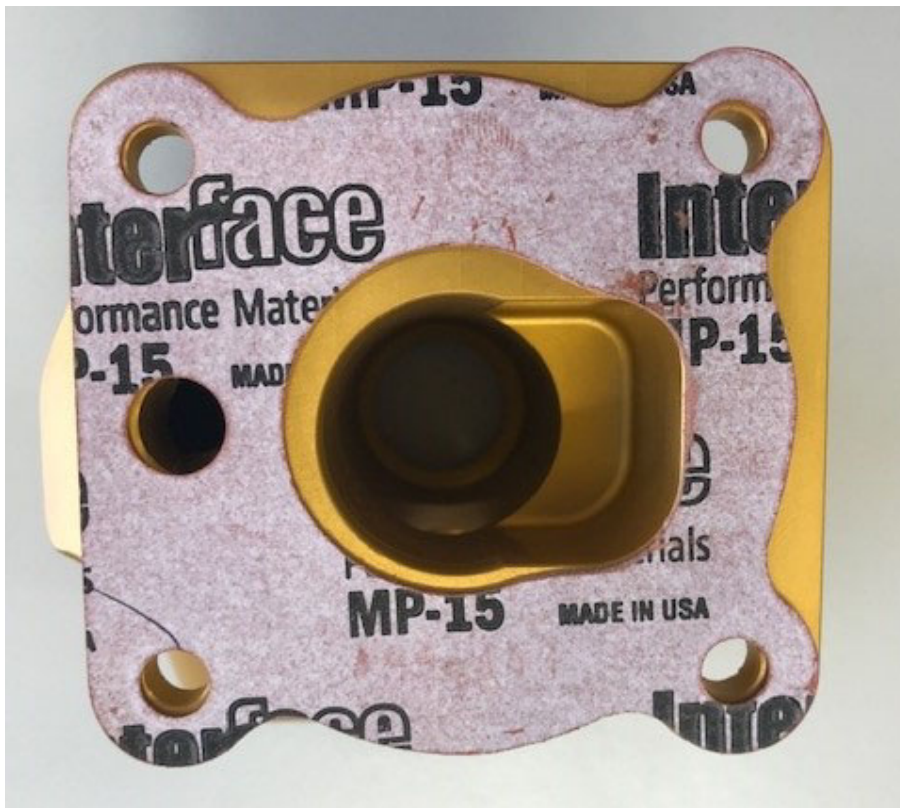


Figure 6

#### 4 Installation of Engine Adapter

Install Engine Adapter as shown in Figure 7 in accordance with Airwolf Filter Corp. installation instruction AFC-K007-A-II dated 4-2-2021 or later approved revision using the 2 x 45° Bulkhead Fittings option.



Figure 7

#### 5 Hose installation

- 5.1 Connect port 'A' on the oil filter base to port 'A' on the engine adapter (LYC-10) using hose GA8-792011-131.
- 5.2 Connect port 'B' on the oil filter base to port 'B' on the engine adapter (LYC-10) using hose GA8-792011-133.
- 5.3 Ensure engine has sufficient oil, then perform an engine run and check for leaks at the remote filter and engine adapter. Rectify any leaks found.

#### Documentation:

Update aircraft log book to reflect incorporation of this Service Bulletin.

#### Continuing Airworthiness:

Refer to Airwolf Instructions for Continued Airworthiness, AFC-K000-ICA, revision IR, dated July 5, 2012 or later FAA accepted revision.

#### Compliance Notice:

Complete the Document Compliance Notice and return to Gippsaero by mail, fax or email.



## DOCUMENT COMPLIANCE NOTICE



Document:

**SB-GA8-2009-55**

**Issue 2**

Aircraft Serial Number: GA8-\_\_\_\_\_

Service Bulletin SB-GA8-2009-55 Issue 2 has been incorporated in the above aircraft.

Date of Incorporation: \_\_\_\_\_

\_\_\_\_\_  
Signed

Print Name: \_\_\_\_\_

Please post, fax or email this compliance notice to:

GippsAero

Attn: Technical Publications

Email: [TECHPUBS@gippsaero.com.au](mailto:TECHPUBS@gippsaero.com.au)

P.O. Box 881

Morwell Victoria 3840

Australia

Fax.: +61 03 5172 1201